



THE CULTURE OF BUILDING



2022 COMPANY PROFILE







# ICM GROUP THE CULTURE OF BUILDING

The origins of the Group date back to 1921 with its incorporation, in Recoaro Terme (Vicenza, Italy). In the Fifties and Seventies, the company, after moving to Vicenza, acquired orders in the field of major works both in the public and private sector, and developed a full range of industrial initiatives related to the construction industry (factories for prefabrication, for the production of concrete, for the processing of iron for reinforced concrete).

In 1976, the scope of the company extended abroad, with the incorporation of Delma S.p.A. and the acquisition of important works in extra-UE countries.

The Group is currently active in large civil, industrial and infrastructural engineering projects and is one of the top ten national companies in Italy in terms of turnover, number of employees and order backlog, as well as one of the top two hundred and fifty international companies, according to the ENR classification. Besides being active in the construction sector, the Group operates in the fields of solutions for environmental issues, real estate and finance. The Group companies are members of the most qualified Italian and international associations and bodies.



## MISSION

The ICM Group proposes itself as a General Contractor for the execution of important works, in terms of both value and technical content, for public bodies and private customers, both in Italy and abroad.

The implementation of new regulations and industrial policies in the sector, the increasing globalization of the market, the increasingly important presence of European competitors and the contraction of the "domestic" market due to economic reasons, together with the consideration that the environmental context can no longer be understood as a mere passive receptor space but should rather be seen as an asset to be enhanced and protected: all this requires a rapid transformation and adaptation of companies active in the construction industry.

## VALUES

The ICM Group has always been inspired by the principles of fairness, transparency and confidentiality as well as of respect for human dignity and for the environment in which it operates.

Human resources are the Group most important asset; therefore, the primary goal is to provide them with the necessary training and to operate in compliance with the maximum safety requirements.

Moreover, through specific improvement programs, the company aims at preserving natural resources and minimizing or eliminating negative environmental effects and risks associated with its production cycles and services, ensuring a socially responsible product and service and promoting the search for processes with low environmental impact, alternative to those currently relied on.

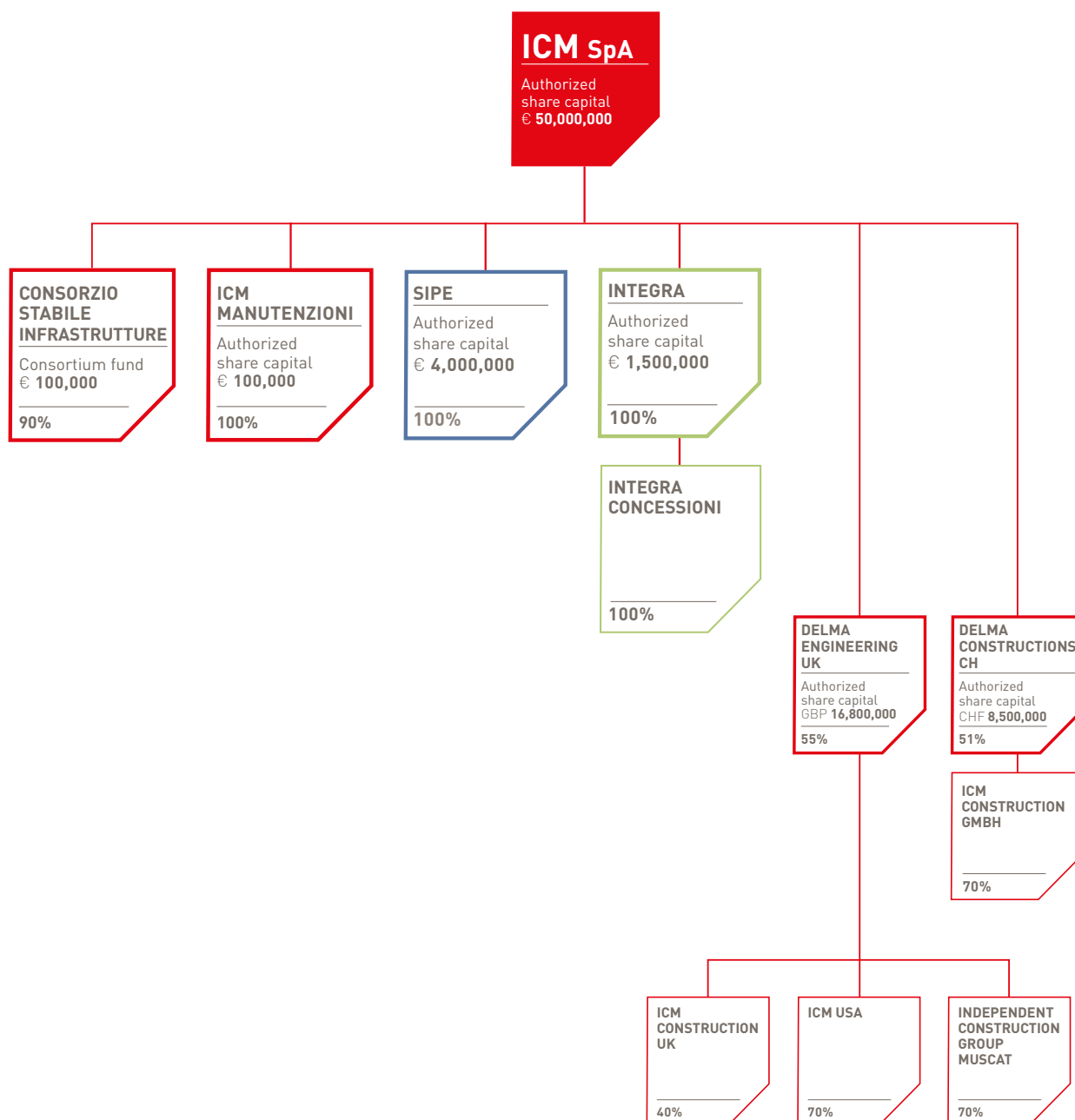






# THE GROUP

- CONSTRUCTIONS
- PREFABRICATION
- ECOLOGY AND CONCESSIONS









# THE COMPANIES OF THE GROUP

## ICM SPA

ICM S.p.A., the Group's operating holding, has gained over the time many years of experience in both the public and private sector through the realization of large residential, managerial and commercial complexes, as well as in infrastructures such as road works in general, viaducts in reinforced concrete and metal structure, airports and railway works, tunnels, special foundations, plumbing works, aqueducts, sewerage systems, dams and maritime works.

Being among the first companies qualified to execute public works by the SOAs, the certification held by the Company includes 37 category registrations, 16 of which for an unlimited amount. The Company is also a member of associations and bodies of the construction industry such as ANCE (the National Association of Building Constructors). The company has acquired the certification of the Quality Management System, in accordance with the UNI EN ISO 9001 standard, since 2002, and subsequently the certifications of the Environmental Management System, pursuant to the UNI EN ISO 14001 standard, and of the Occupational Health and Safety Management System, in compliance with ISO 45001. Since January 2021, the company has acquired the UNI ISO 39001 certification regarding the Traffic Management System and then the ISO 37001 certification regarding Anti-Bribery Management Systems and the SA 8000 certification regarding Social Accountability.

The Company has put in place a system to adhere to the principles of legality, based on a Code of Ethics inspired by the principles of fairness, transparency, honesty, and integrity, in accordance with the highest standards and the national and international guidelines. The Organization, Management and Control Model inspired by it implements the principles mentioned above by translating them into a procedural system that establishes a rigorous behavioral code that all those who work in the interests of the Company are required to observe, thus assuring the effective maintenance of a system preventing the commission of offenses in accordance with the Italian Legislative Decree 231/2001 and the international best practices.

Realization of a logistics hub at Ardea (Rome)





## S.I.P.E. SOCIETÀ INDUSTRIALE PREFABBRICATI EDILI SPA

S.I.P.E. - Società Industriale Prefabbricati Edili - S.p.A., established in 1963, operates in the industrialized building sector, allowing the complete realization of civil, industrial and commercial buildings through the use of its prefabricated structures.

S.I.P.E. S.p.A. holds patents relating to advanced technological processes for the use of prefabrication in seismic areas.

S.I.P.E. S.p.A. occupies a major position in the reference market (North Italy) also thanks to the significant investments made for the construction of the new plant (covering an area of over 115,000 square meters) and in the new production lines in Almisano.

## INTEGRA SRL

Integra S.r.l. operates in the field of services and plants for environmental protection and natural resources preservation since 1983. In this field it designs, builds and manages water purification/potabilization plants, treatment plants and liquid waste disposal, to carry out environmental reclamation works and to perform intervention to ensure the safety of contaminated sites, as well as to provide for the intermediation of waste, besides having an accredited analysis laboratory.

Integra follows and develops the opportunities offered by the market in the concession sector by means of the subsidiary Integra Concessioni S.r.l., which deals with all concession activities currently in progress. The two companies have their own liquid waste treatment platforms, authorized under normal conditions, with a total capacity of over 100,000 tons per year.

## DELMA ENGINEERING UK LTD

This is the sub-holding company established in England to coordinate the Group's activities carried out abroad through subsidiaries. The company is owned as for 45% by Simest S.p.A. - Cassa Depositi e Prestiti Group.

## CONSORZIO STABILE INFRASTRUTTURE

This is a Consortium entirely made up of companies belonging to the Group (ICM S.p.A. 90% - S.I.P.E. S.p.A. 5% - Integra S.r.l. 5%) pursuant to Article 36 of the Italian Legislative Decree 163/2006. The Consortium aims at carrying out construction and infrastructural works, both in Italy and abroad, relying on the operational structures, skills and expertise gained by all three companies making up the consortium.





# MAIN BUILDING SITES IN PROGRESS

## IN ITALY

<b>BOLOGNA</b>	<b>Building</b>	<b>Cineca</b> - Design and execution of the site adaptation works for the Euro HPC supercomputer
<b>BRESCIA</b>	<b>Railways</b>	<b>RFI</b> - Construction of the HS/HC railway line between Milan and Verona, second functional lot Brescia-Verona
<b>CAGLIARI</b>	<b>Military</b>	<b>Leonardo S.p.A.</b> - Civil Works
<b>CATANIA</b>	<b>Military</b>	<b>US Navy</b> - Construction of two hangars in Sigonella
<b>FERRARA</b>	<b>Building</b>	<b>Miscellaneous customers</b> - Works in the petrochemical industrial site "Enichem"
<b>GENOA</b>	<b>Tunnels</b>	<b>Autostrade per l'Italia</b> - Tunnel maintenance various agreements
	<b>Maritime Works</b>	<b>Municipality of Genova</b> - New quay for the shipbuilding industry at Porto Petroli
<b>LECCO</b>	<b>Tunnels</b>	<b>Autostrade per l'Italia</b> - Tunnel maintenance various agreements
<b>MILAN</b>	<b>Building</b>	<b>Coima SGR</b> - Construction of the real estate complex for the two towers "Gioia Est" and "Gioia Ovest"
<b>NAPLES</b>	<b>Railways</b>	<b>Ente Autonomo Volturno</b> - Modernization and upgrading of the former "Alifana" railway line between Piscinola and Secondigliano
	<b>Railways</b>	<b>Ente Autonomo Volturno</b> - Modernization and upgrading of the former "Alifana" railway line between Secondigliano and Di Vittorio
	<b>Subways</b>	<b>Ansaldo STS</b> - Naples Subway, various lots of line 1 and line 6
	<b>Military</b>	<b>US Navy</b> - "MACC Napoli" framework contract
<b>NOVARA</b>	<b>Airports</b>	<b>Leonardo S.p.A.</b> - Civil Works
<b>NUORO</b>	<b>Dams</b>	<b>Consorzio Bonifica Sardegna Centrale</b> Construction of the Maccheronis dam
<b>PIACENZA</b>	<b>Building</b>	<b>Generali SpA Real Estate</b> Logistics hub called TP-5
<b>REGGIO CALABRIA</b>	<b>Roads</b>	<b>ANAS</b> - Construction of the bypass road to the town of Palizzi Marina, second functional lot
<b>SIRACUSA</b>	<b>Maritime Works</b>	<b>Port Authority Eastern Sicily Sea</b> New docks Port of Augusta
<b>VICENZA</b>	<b>Military</b>	<b>US Army</b> - "MATOC Vicenza" framework contract
	<b>Military</b>	<b>US Navy</b> - Realization of new High School
	<b>Roads</b>	<b>ANAS</b> - Completion of the Vicenza ring road
	<b>Roads</b>	<b>BS VR VI PD Motorway</b> - Montecchio Maggiore tollbooth



## IN THE WORLD

AUSTRIA	Railways	<b>OBB Infrastruktur AG</b> - Marchtrenk, 4-track railway extension Linz-Wels
	Bridges/Galleries	<b>ASFINAG</b> - A26 motorway, construction of a bridge over the Danube and of the connection tunnels to Linz
CROATIA	Roads	<b>Hrvatske Autoceste</b> - Novi-Vinodolski motorway bypass of the A7 Rupa-Rijeka-Zuta Lokva motorway
DJIBOUTI	Military	<b>US Navy</b> - "MACC Djibouti" and "Mini MACC Djibouti" framework contracts
KENYA	Smart City	<b>KoTDA</b> - Design and construction of the infrastructure for the development of the new Smart City of Konza
LIBYA	Building	<b>LIFECO</b> - Industrial building in Marsa Brega
QATAR	Military	<b>Ministry of Defense</b> - Infrastructural works and buildings
ROMANIA	Military	<b>US Navy</b> - "JOC Romani" framework contract in Deveselu
SLOVAKIA	Railways	<b>Železnice Slovenskej Republiky</b> - Modernization of the railway section Devínska Nová Ves – Kúty – Slovakia/Czech Republic border
SWITZERLAND	Building	<b>CERN</b> - Construction of the new visitor center

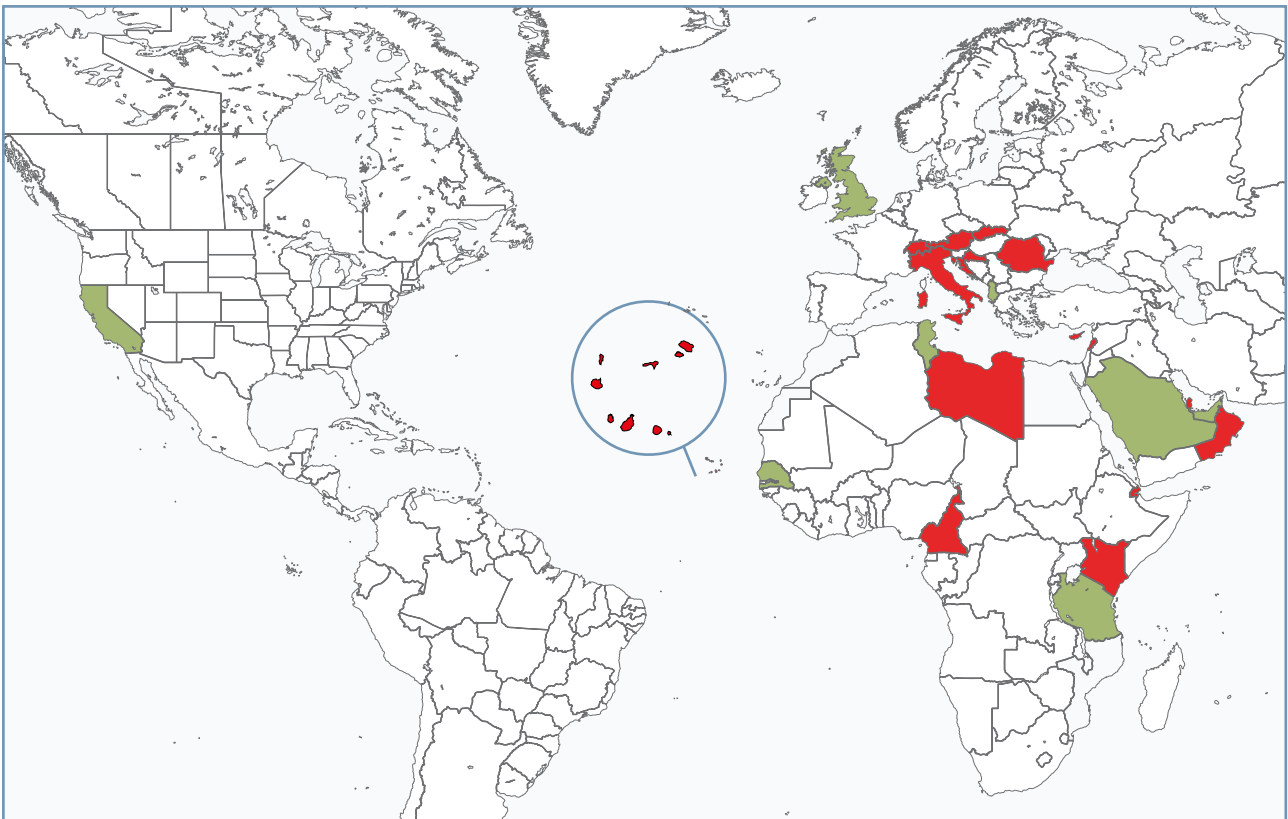


Ex-Atifana (Naples) railway line on behalf of the Ente Autonomo Volturno



# GEOGRAPHICAL PRESENCE

- OPERATING STRUCTURE
- COMMERCIAL DEVELOPMENT STRUCTURE
- COMPANY
- BRANCH



ITALY	ALBANIA	AUSTRIA	CAMEROON	CAPE VERDE	CYPRUS	KENYA	LEBANON	LIBYA	OMAN	QATAR	ROMANIA	SLOVAKIA	SWITZERLAND	TANZANIA	TUNISIA	U.A.E.	U.S.A.	U.K.
<span style="color: gray;">■</span>	<span style="color: gold;">■</span>	<span style="color: gray;">■</span>	<span style="color: gold;">■</span>	<span style="color: gold;">■</span>	<span style="color: gold;">■</span>	<span style="color: gold;">■</span>	<span style="color: gold;">■</span>	<span style="color: gold;">■</span>	<span style="color: gold;">■</span>	<span style="color: gold;">■</span>	<span style="color: gold;">■</span>	<span style="color: gold;">■</span>	<span style="color: gold;">■</span>	<span style="color: gold;">■</span>	<span style="color: gold;">■</span>	<span style="color: gray;">■</span>	<span style="color: gray;">■</span>	<span style="color: gray;">■</span>



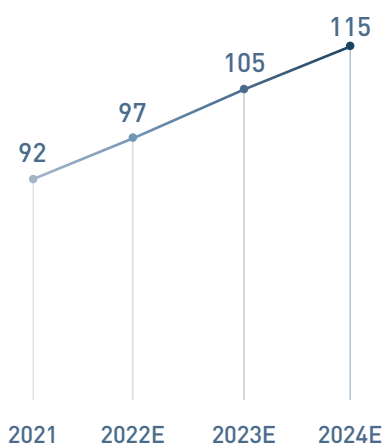




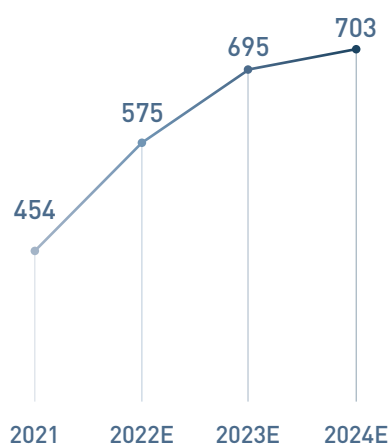
# FINANCIAL STATEMENTS 2021 AND 2022-2024 BUSINESS PLAN

## SUMMARY DATA in millions of EUR

### NET EQUITY

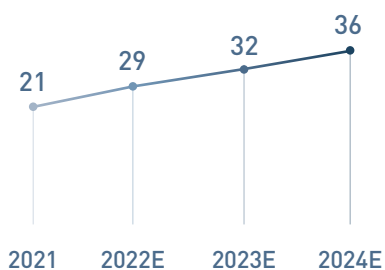


### VALUE OF PRODUCTION



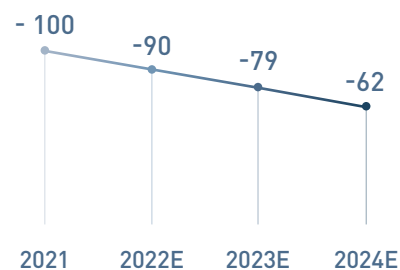
### EBIT

Result before taxes and financial charges



### NFP

Net financial position









# ORDER BACKLOG ICM SpA

AS OF 12/31/2021 | TOTAL MILLIONS € 1,808

## BY ACTIVITY SECTOR

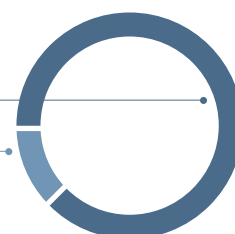
PUBLIC  
PRIVATE

mil. € 1,591

88%

mil. € 217

12%



## BY AREA

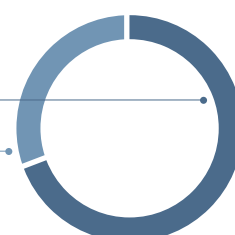
ITALY  
FOREIGN COUNTRIES

mil. € 1,229

68%

mil. € 579

32%



## BY TYPE

INFRASTRUCTURES  
BUILDING  
MAINTENANCE WORKS

mil. € 1,157

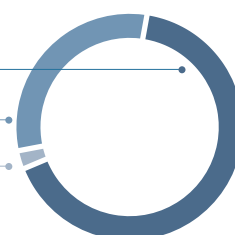
64%

mil. € 615

34%

mil. € 36

2%



## BY SDGs

SUSTAINABLE MOBILITY  
OTHER  
GREEN BUILDING  
ENVIRONMENTALLY  
SUSTAINABLE DEVELOPMENT

mil. € 1,103

61%

mil. € 398

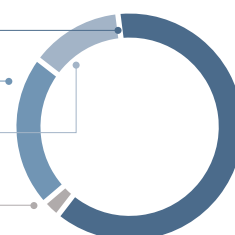
22%

mil. € 235

13%

mil. € 72

4%









# THE INTEGRATED MANAGEMENT SYSTEM



- **Quality Management System** ISO 9001:2015
- **Improve Environmental Management** ISO 14001:2015
- **Anty-Bribery Management System** ISO 37001:2016
- **Road traffic safety Management System** ISO 39001:2016
- **Occupational health and safety Management System** ISO 45001:2018
- **SA 8000 Ethics Certification**

The **B1.1 credit rating** assigned by Cerved identifies ICM S.p.A. as a solvent entity having an economic and financial structure that allows it to meet its financial commitments.







In 2021, ICM SpA was awarded the **SILVER Sustainability Rating**, issued by EcoVadis. This recognition places the company among the Top 25% companies in terms of sustainability management.



The Group holds the certificate of qualification for the execution of public works issued in accordance with Italian Presidential Decree 207/2010 and designs and executes works that have been awarded the most important **"Green" certifications**.



The qualifications issued to ICM S.p.A. are 37, 16 of which are **"Unlimited Qualifications"**.



Motorway A26 "Linzer Autobahn", construction of a bridge and of the connecting tunnels, Austria

# REGISTRATIONS OF UNLIMITED AMOUNT

CATEGORY		REGISTERED COMPANY
<b>OG01</b>	Civil and industrial buildings	<b>ICM S.p.A.</b>
<b>OG02</b>	Restoration and maintenance of immovable property subject to protection under the provisions concerning cultural heritage and environment	<b>ICM S.p.A.</b>
<b>OG03</b>	Roads, motorways, bridges, viaducts, etc.	<b>ICM S.p.A.</b>
<b>OG04</b>	Tunnels	<b>ICM S.p.A.</b>
<b>OG05</b>	Dams	<b>ICM S.p.A.</b>
<b>OG06</b>	Aqueducts, sewage systems, irrigations, etc.	<b>ICM S.p.A.</b>
<b>OG07</b>	Maritime works and draining works	<b>ICM S.p.A.</b>
<b>OG08</b>	Fluvial works, defense, hydraulic setting and reclamation	<b>ICM S.p.A.</b>
<b>OG11</b>	Technological plants	<b>ICM S.p.A.</b>
<b>OS09</b>	Plants for luminous signaling and traffic safety	<b>ICM S.p.A.</b>
<b>OS13</b>	Prefabricated structures in reinforced concrete	<b>ICM S.p.A.</b>
<b>OS18-A</b>	Mounting of metal framing	<b>ICM S.p.A.</b>
<b>OS21</b>	Special structural works	<b>ICM S.p.A.</b>
<b>OS26</b>	Floorings and special superstructures	<b>ICM S.p.A.</b>
<b>OS28</b>	Thermal and conditioning plants	<b>ICM S.p.A.</b>
<b>OS30</b>	Internal electric, telephone, radiotelephone and television plants	<b>ICM S.p.A.</b>

**ICM S.p.A.** holds the certificate of qualification as General Contractor of rank Ist.























# HEADQUARTERS

## ITALY

### Vicenza

Viale dell'Industria, 42  
T. +39 0444 336111  
F. +39 0444 961541  
icm@gruppoicm.com

### Rome

Via G. Saliceto, 1/C  
T. +39 06 44234738  
F. +39 06 44258222  
ufficio.roma@gruppoicm.com

## AUSTRIA

Arge A26 Donau Brucke  
Sandgasse 14A, 4020 Linz  
T. +43 732 2720500

## ROMANIA

Strada Maria Rosetti n.8/A  
Sector 2 - 020485 Bucharest  
T. +40 314 344804

## SLOVAKIA

Tower 115 - Pribinova 25,  
Bratislava 81109

## SWITZERLAND

6 Place des Eaux Vives,  
Geneve 1207 - Case Post. 4  
1217 Meyrin 1

---

## CAMEROON

Rue de l'Ambassade de Tunisie - Golf  
BP33011 Yaounde  
T. +237698400195

## CAPE VERDE

C.P. 8/A Achada S. Antonio  
Praia - Santiago Island  
T. +238 2647502  
F. +238 2647503

## KENYA

Off Ring Road - Centenary House  
P.O. Box 38514 - 00623 Nairobi  
T. +254 72 3127820

## LEBANON

Victoria Center 9th Floor  
Dbayeh - Beirut 04-522228

## LIBYA

Khalat El Forjan  
P.O. Box 81882/12422 - Tripoli

## QATAR

Bldg 186 Al Jazeera Tower  
19th Floor Unit 1903, Street 836  
Zone 61, West Bay Area  
P.O. Box 20159 - Doha  
T. +974 44790041  
F. +974 44682077









THE CULTURE OF BUILDING

[www.gruppoicm.com](http://www.gruppoicm.com)